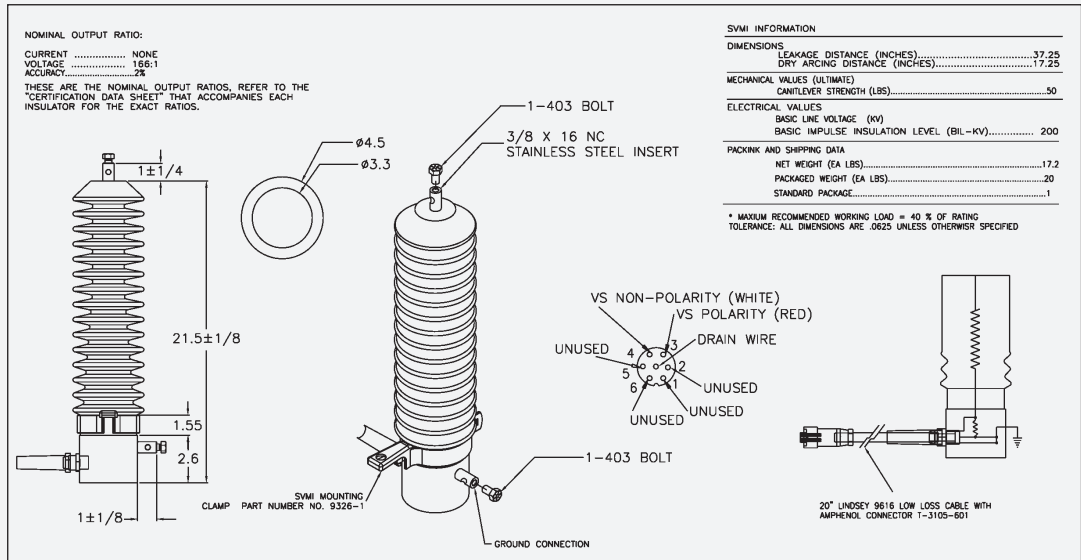
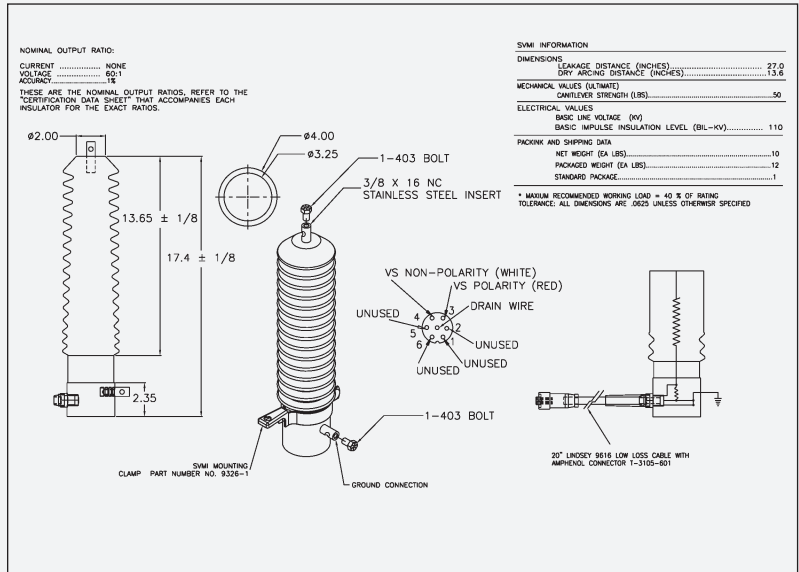


Voltage Monitoring Insulators (SVMI)

Overhead Voltage Monitoring Insulators for Distribution Automation Applications

Voltage Monitoring Insulators (SVMI) Insulation Class 15 kV

Operating Voltage L-L [kV]	Operating Voltage L-G [kV]	AC Output Voltage [V]	Load (instrument) Impedance Greater Than	Lindsey Part Number
12.47	7.2	120	1 M	9315
12.47	7.2	120	2 M	931X/60/2M
12.47	7.2	120	5 M	931X/60/5M
12.47	7.2	120	500k	931X/60/500k
12.47	7.2	120	240k	931X/60/240k
13.2	7.62	120	1M	931X/63.5/1M
13.2	7.62	120	2.2M	931X/63.5/2.2M
13.2	7.62	120	240k	931X/63.5/240k
13.8	7.97	120	1M	931X/66.4/1M
13.8	7.97	120	240k	931X/66.4/240k
14.4	8.3	120	240k	931X/69.3/240k
11.95	6.9	120	1M	931X/57.5/1M
10.4	6.0	120	2.2M	931X/50/2.2M
11.4	6.6	120	1M	931X/55/1M
12.47	7.2	5.1	1M	931X/1400/1M
12.47	7.2	3.3	1M	931X/2200/1M



Voltage Monitoring Insulators (SVMI) Insulation Class 25 kV

Operating Voltage L-L [kV]	Operating Voltage L-G [kV]	AC Output Voltage [V]	Load (instrument) Impedance Greater Than	Lindsey Part Number
24.94	14.4	120	1 M	9326
24.94	14.4	120	500k	932X/120/500k
16.42	9.48	120	5 M	932X/79/5M
17.3	10.0	120	1.4 M	932X/83.3/1.4M
23.0	13.28	120	1 M	932X/110.6/1M
24.94	14.4	6.55	1 M	932X/2200/1M

Voltage Monitoring Insulators (SVMI) Insulation Class 35 kV

Operating Voltage L-L [kV]	Operating Voltage L-G [kV]	AC Output Voltage [V]	Load (instrument) Impedance Greater Than	Lindsey Part Number
34.5	19.92	120	1 M	9337
34.5	19.92	120	500k	933X/166/500k
27.6	15.94	120	1 M	933X/132.8/1M
34.5	19.92	6.0	1 M	933X/3300/1M