

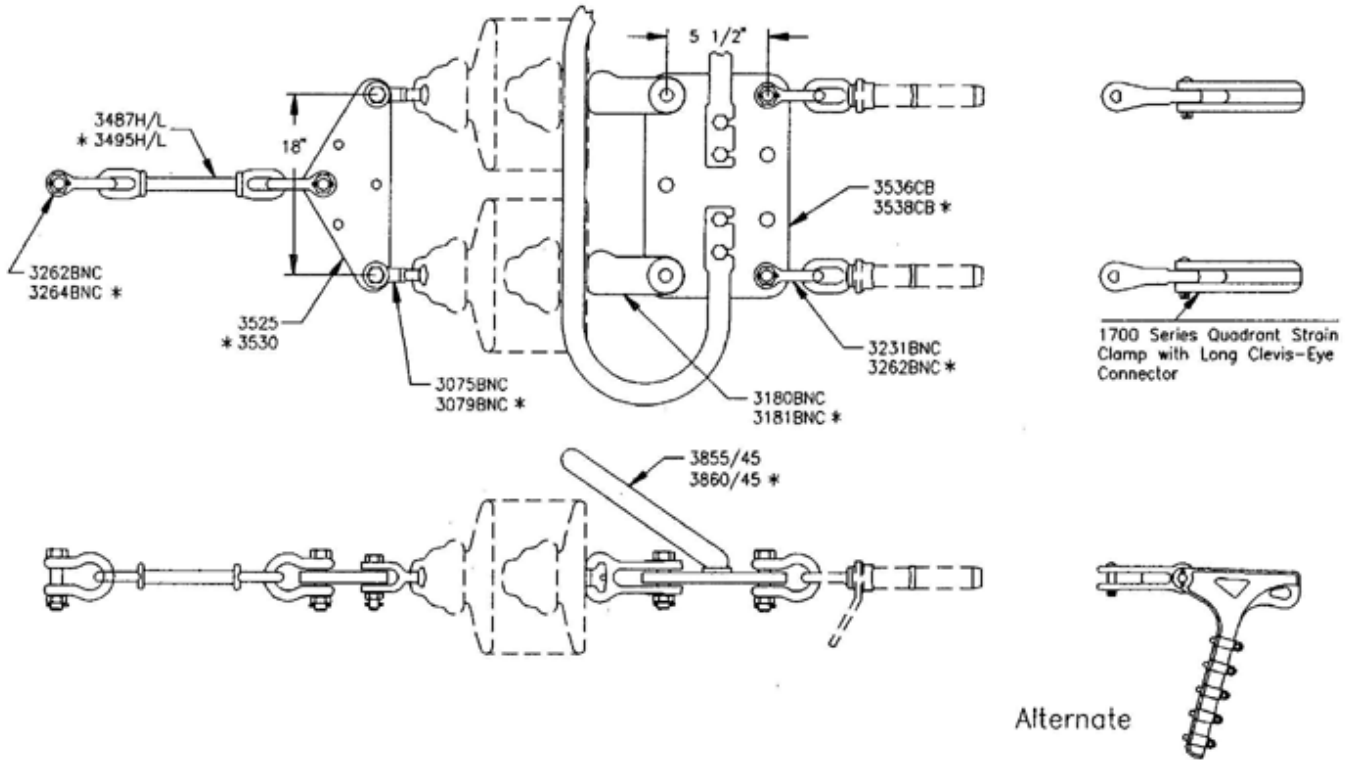


Transmission Assemblies

EHV Tension Assemblies

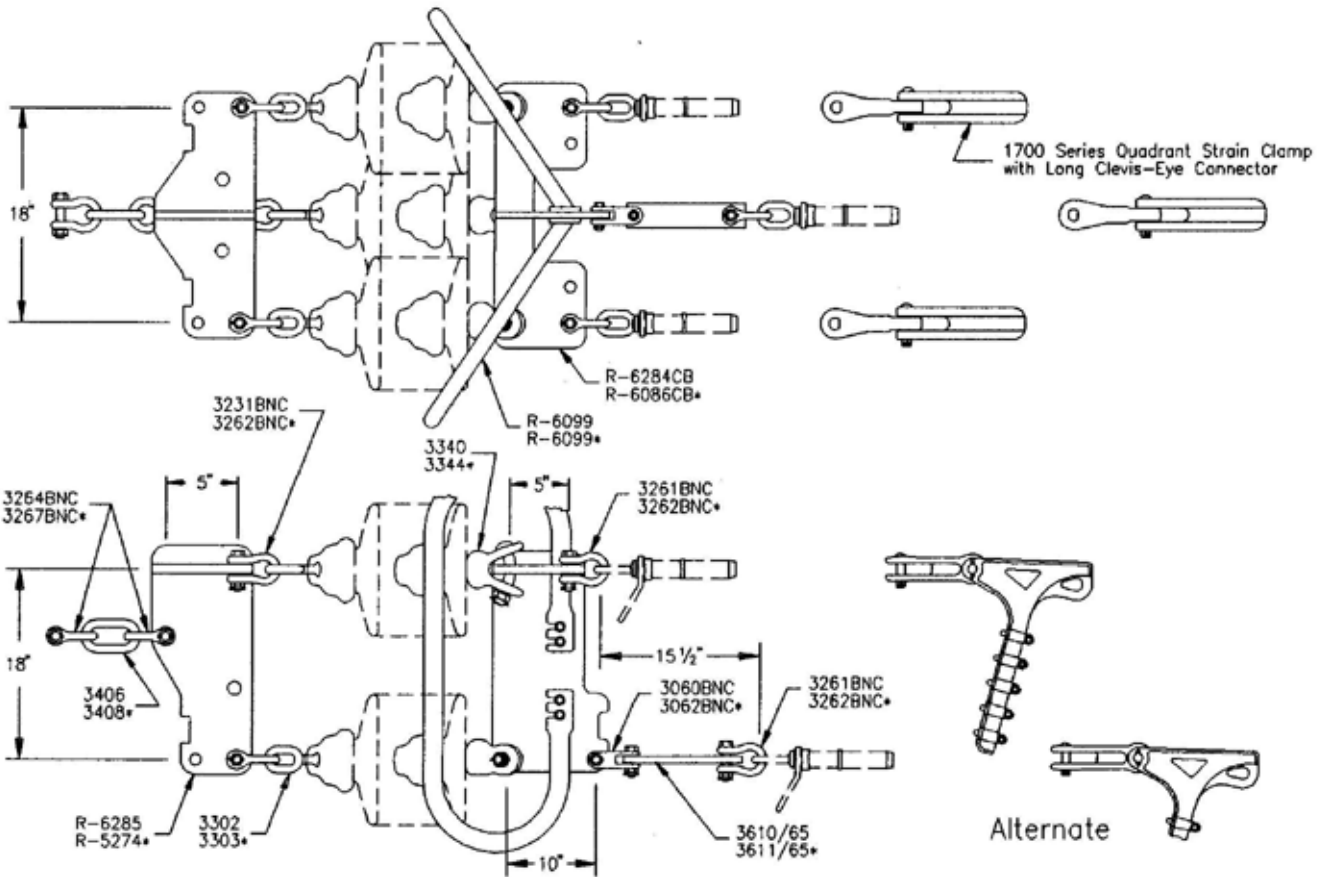
Two Conductor Tension Assembly

60,000 lb. Assembly
*100,000 lb Assembly
345 kV to 500kV Class

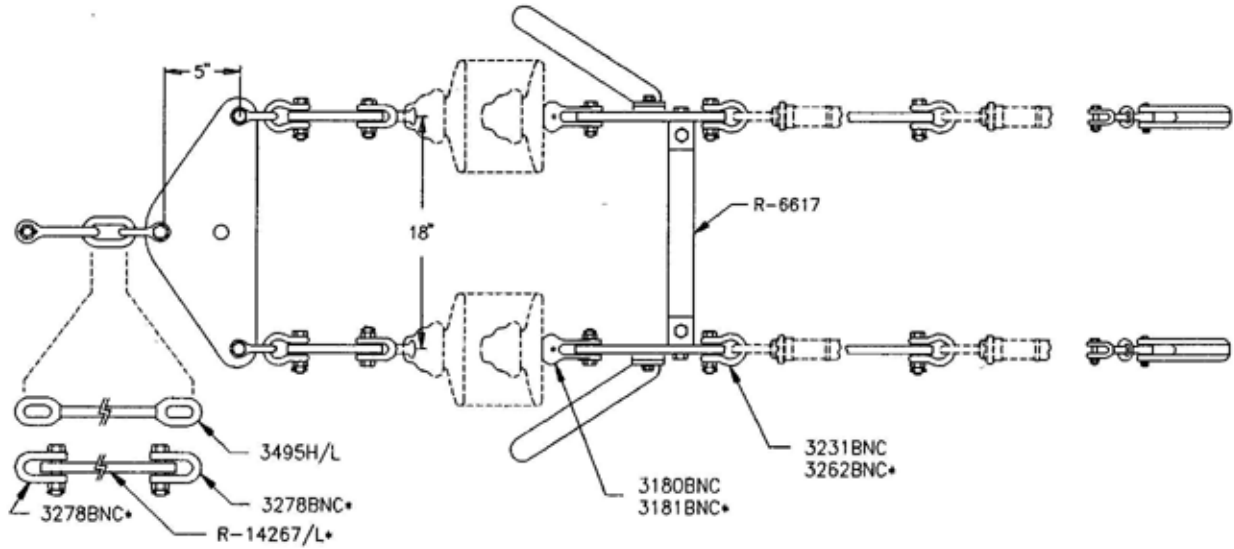


Tree Conductor Tension Assembly

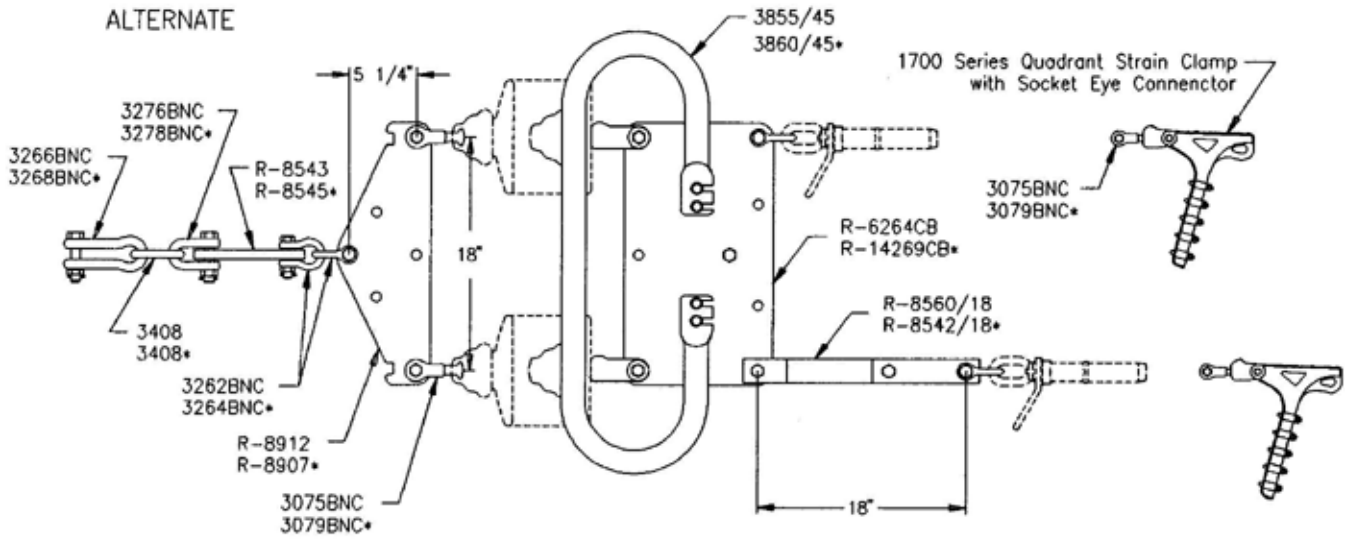
90,000 lb. Assembly
*150,000 lb Assembly
380 kV to 500kV Class



Four Conductor Tension Assembly
 120,000 lb. Assembly
 *200,000 lb Assembly
 380 kV to 765kV Class



ALTERNATE



ALTERNATE