



Insulator Extension Arms

Fail-Safe Insulator Extension Arms

In keeping with the New Fail-Safe look in horizontal construction, Lindsey Manufacturing Company has developed a complete line of Fail-Safe Insulator Extension Arms for heavy duty and light duty construction.

All of our Fail-Safe designs combine fail-safe features along with improved appearance of power poles in keeping with the public demand for more aesthetic overhead lines.

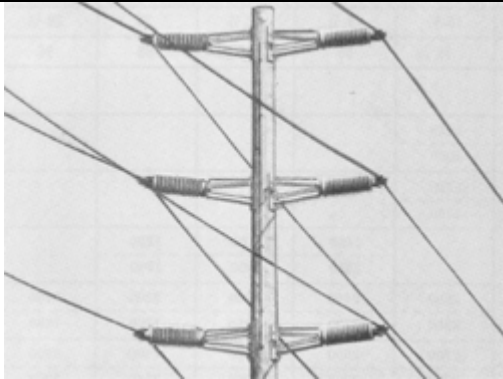
Extensive tests in our own plant and independent tests by an insulator manufacturer prove conclusively that our Fail-Safe design can withstand several times the impact shock loads required to break a rigidly mounted horizontal line post insulator.

Superior arm strength makes possible longer spans, resulting in the economy of fewer poles. Arms are safe to climb, easily installed, grounded and maintained, and have a low wind load. They also feature low weight-to-strength and cost-to-strength ratios.

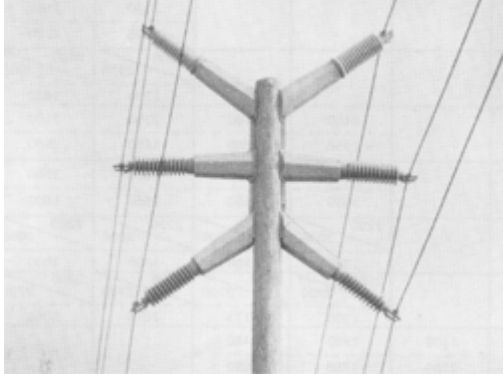
To facilitate faster and more economical construction, Lindsey has provided captive parts wherever possible using lightweight materials. All units are designed to reduce the number of steps required for installation.

The optional two-piece hot dipped galvanized steel shroud is removable for ease of installation and climbing.

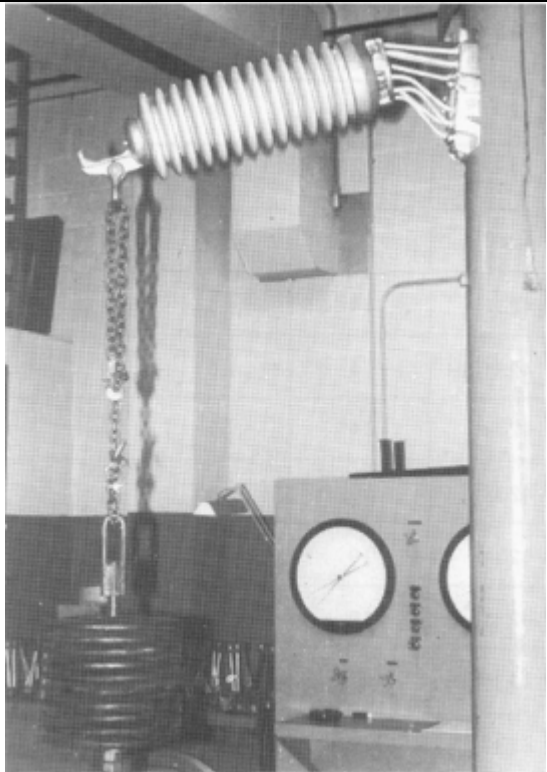
All parts are 60-45-15 ductile iron and steel, hot dipped galvanized prior to assembly.



New Fail-Safe look in horizontal construction.



Award winning Dreyfuss configuration with Lindsey Fail-Safe Extension Arms.



Impact test results in no damage to insulator.