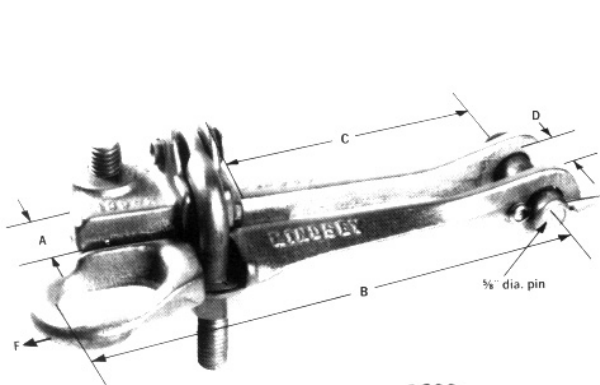




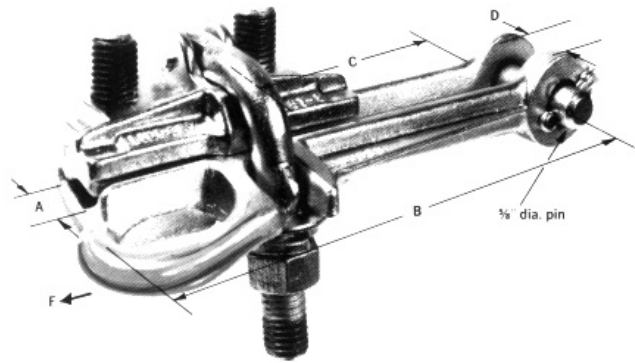
Strain Clamps

"HOTLINE" Strain Clamps

Ductile iron and aluminum / clevis end

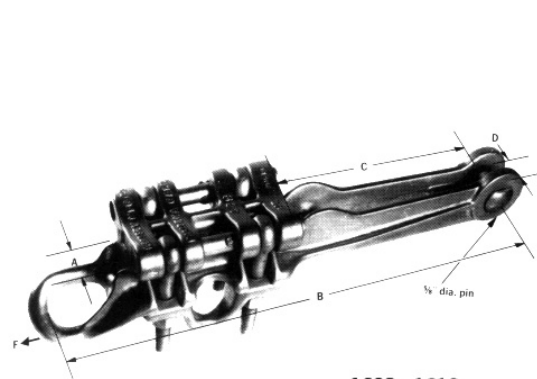


1600

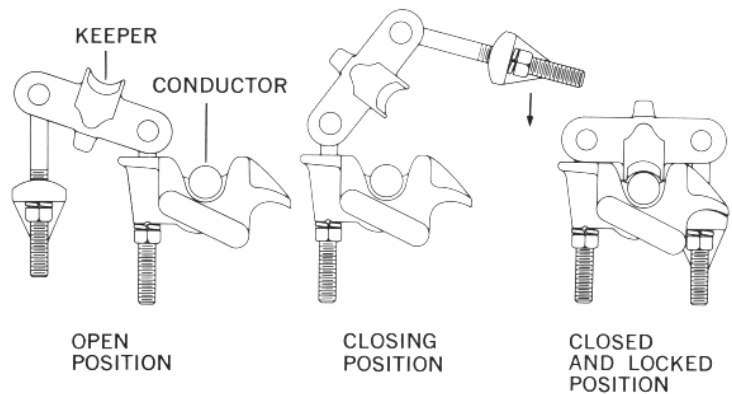


1604, 1605

TYPICAL CONDUCTOR CLAMPING SEQUENCE



1608, 1612



Lindsey Manufacturing Company's "Hotline" Strain Clamps are appropriately named by some utilities "Fliptop dead ends" and are specially designed for safe use with hot sticks or gloves. The stacked-bolt construction assures that all parts remain assembled or safety and ease of installation. Utilizing the minimum number of bolts consistent with good design provides additional cost saving and ease of clamping. Design of the clamp body and keeper assures proper conductor gripping without notching or weakening the conductor. This is accomplished by an increasing pressure on the conductor toward the insulator end of clamp. The Series is available in various models, for conductors from .160 to 1.00 inch diameter. Material are high strength, heat treated 356-T6 aluminum alloy or 60-45-15 ductile iron with galvanized bolts, nuts and pin and stainless steel cotter key.

DUCTILE IRON BODY AND KEEPER

CAT. No.	A CONDUCTOR DIAMETER	DIMENSIONS IN.			ULTIMATE STRENGTH F	BOLT TORQUE FT./LBS.	BOLT SIZE IN.
		B	C	D			
1605	.398-.684	8	3 3/4	11/16	8000	55	5/8
1681	.16-.51	7 1/2	3 1/2	11/16	6500	35	3/8

ALUMINUM BODY AND KEEPER

1600	.250-.447	7 1/2	4 3/4	11/16	4500	35	1/2
1604	.398-.684	8	3 3/4	11/16	7000	55	5/8
1608	.560-.800	12	7	11/16	7000	35	1/2
1612	.795-1.00	14	8	11/16	8000	35	1/2