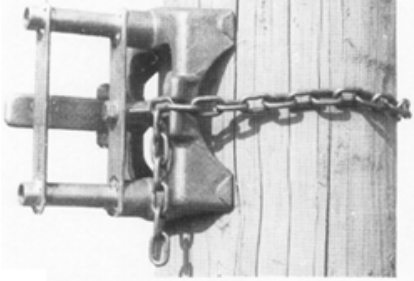
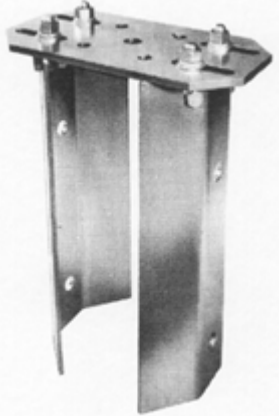
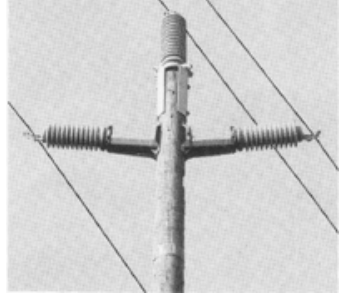
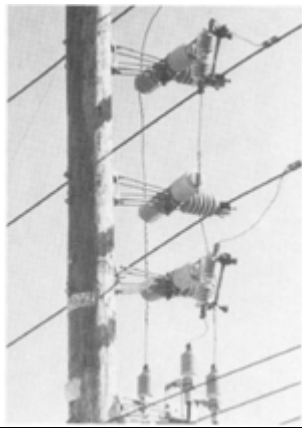
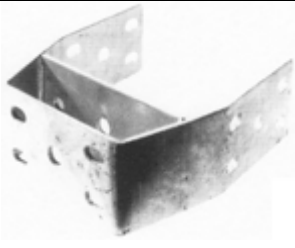
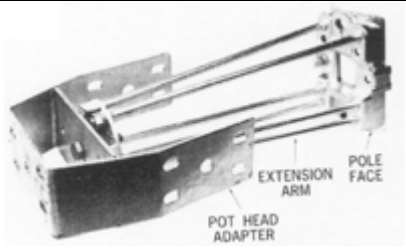
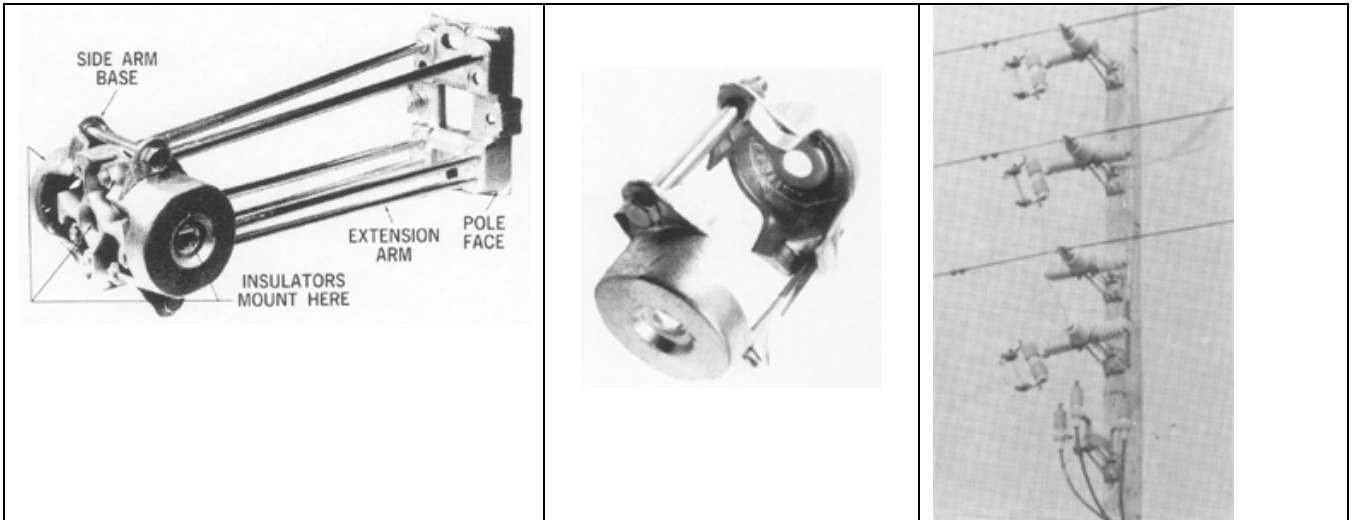


Insulator Extension Arms

Insulator Extension Arms Accessories

| | | |
|---|---|---|
|  |  |  |
| <p>Pole Hole Drilling Jigs With the growth in use of horizontally mounted insulators and extension arms mounted back-to-back it has been difficult to properly drill the holes. Lindsey makes a variety of Pole Hole Drilling Jigs that makes it possible to accurately drill parallel holes in poles. See Section 8 - Page 5 for complete details.</p> | <p>Pole Top Brackets Lindsey's No. 2050 Pole Top Bracket is designed to compliment our Fail-Safe Insulator Extension Arms for mounting in triangular configuration. It securely mounts to a pole top for installation of a vertical insulator directly above the center of the pole for more uniform appearance. See Section 2 - Page 3 for complete details.</p> | |
|  |  |  |
| <p>Pot Head Adapter The No. 4300 Pot Head Adapter is designed to mount on the end of Lindsey's Fail-Safe Insulator Extension Arm with a single bolt. Material is 1/4" x 4" steel with 9/16" diameter holes and 3/8" x 1" slots. Hot dipped galvanized.</p> | | |



Side Arm Base

The No. 4350 Side Arm

Base fits on the No. 4131

Fail-Safe Insulator Extension Arm and provides a base on which two additional horizontal insulators or other equipment may be mounted. The Side Arm Base fits securely on the end plate and is held in place with two bolts. The outer diameter of the Side Arm Base is 3 1/2" and the insulator mounting holes are 1 3/16" diameter. Material is 60-45-15 ductile iron, hot dipped galvanized.