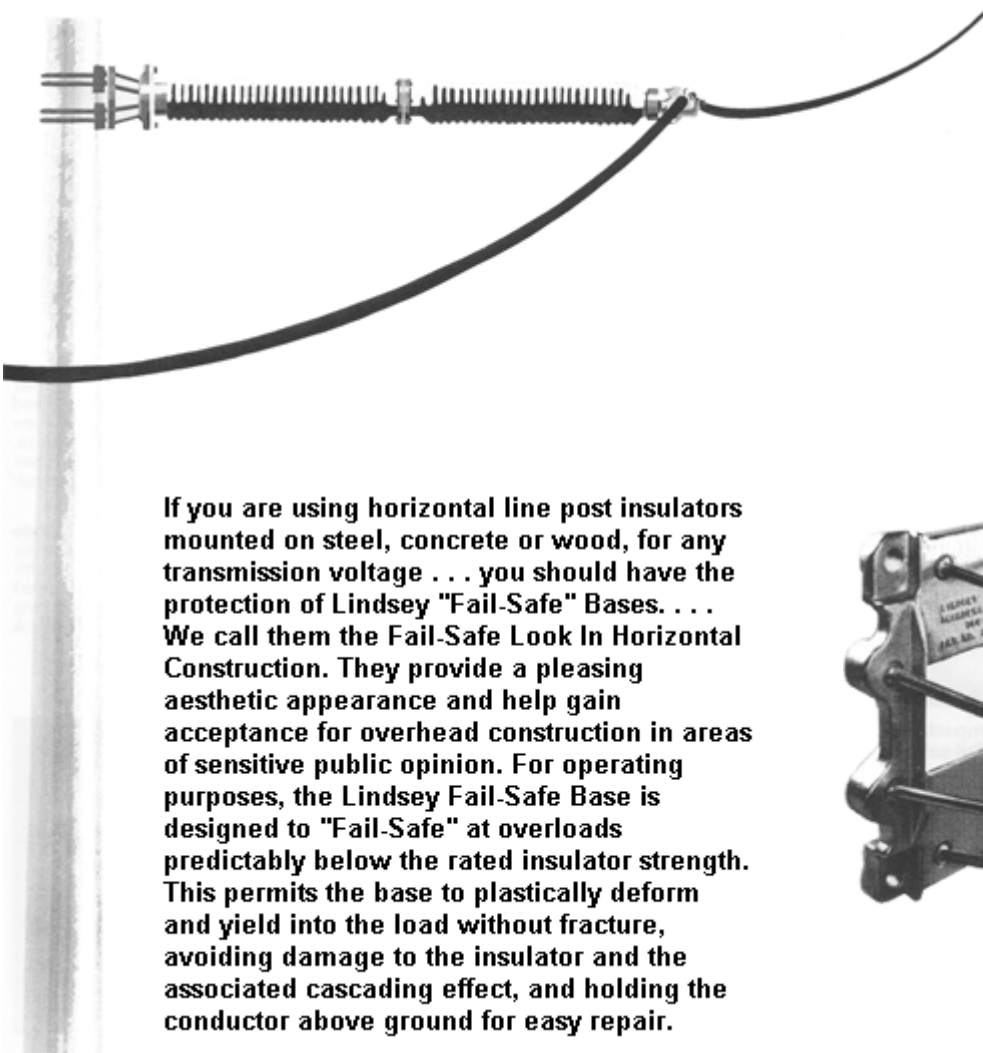




Insulator Extension Arms

Lindsey Fail-Safe Insulator Bases

Your best solution for broken conductor galloping and ice loading problems.



If you are using horizontal line post insulators mounted on steel, concrete or wood, for any transmission voltage . . . you should have the protection of Lindsey "Fail-Safe" Bases. . . . We call them the Fail-Safe Look In Horizontal Construction. They provide a pleasing aesthetic appearance and help gain acceptance for overhead construction in areas of sensitive public opinion. For operating purposes, the Lindsey Fail-Safe Base is designed to "Fail-Safe" at overloads predictably below the rated insulator strength. This permits the base to plastically deform and yield into the load without fracture, avoiding damage to the insulator and the associated cascading effect, and holding the conductor above ground for easy repair.

