



## Conductors Clamps

**"UNICON" Tie-Top Insulator Clamps (For use on vertical insulators)**

### Convert Tie-Top Insulators to Clamps-Top

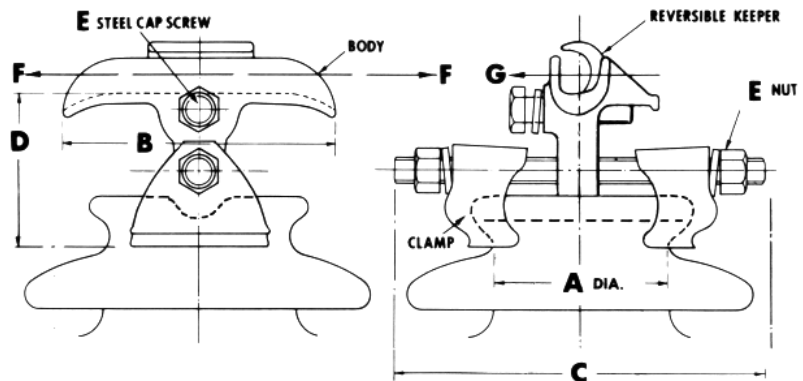
Lindsey UNICON conductor clamps convert tie-top insulators to clamps-top. The result has all the safety advantages inherent in the clamp-top, plus economy. On new construction the cost off tie-top insulators plus UNICON is comparable to clamp/top.

UNICON clamps can be installed with a standard wrench or hot stick without removing parts. This eliminates long, hazardous tie wires and makes maintenance on hot lines safer and faster. These clamps are used to increase the capacity of a primary voltage system by increasing the conductor size and re-using the installed insulator and construction wherever possible.

UNICON clamps combine an adjustable insulator clamp with a unique single-bolt reversible keeper which makes it possible to fit a wide range of insulator and conductor sizes with minimum inventory. Radio interference and the cost of future reconductoring and/or armor rodding is also reduced. Years of development testing and trouble-free field service of more than a half million UNICON clamps attest to their safety, reliability and economy.

### Construction Features:

Only three clamp sizes are required for conductor diameters from .25 to 1.5 inches, and the clamps fit insulator neck sizes 2" to 6 1/4". No parts need be removed for assembly to insulator or clipping in conductor. All cast parts are high strength heat treated 352-T6 aluminum alloy. Steel parts are hot dip galvanized for maximum corrosion resistance. For correct clamp size to use with a given conductor, and neck sizes of pin and post type insulators, refer to tables in the Engineering Data section of this catalog.



U.S. Patent 3,026,368

CAT No.	CONDUCTOR DIAMETER (INCHES)	INSULATOR SIZE	CLAMP DIMENSIONS (INCHES)				ULTIMATE STRENGTH (POUNDS)	
			A DIA.	B	C	D	E	F
1200	.250- .800	2-2 1/2	5 1/8	5 3/4	3 1/4	1/2	1500	1500
1204	.250- .800	2 1/2-3	5 1/8	5 3/4	3	1/2	1500	1800
1208	.250- .800	3-4	5 1/8	7 3/4	3	1/2	1500	1800
1212	.600-1.060	2 1/2-3	5 3/4	5 3/4	3 1/2	1/2	1800	2800
1216	.600-1.060	3-4	5 3/4	7 3/4	3 1/2	1/2	1800	2800
1220	.600-1.060	4-4 3/4	5 3/4	8	3 1/2	5/8	2500	2800
1224	.600-1.060	4-5 3/4	5 3/4	9	3 1/2	5/8	2500	2800
1228	.600-1.060	4-6 3/4	5 3/4	11 1/2	3 1/2	5/8	2500	2800
1234	1.000-1.500	3-4	6	5 3/4	3 1/2	1/2	1800	2800
1236	1.000-1.500	4-5 3/4	6	9	3 1/2	5/8	2500	2800
1240	1.000-1.500	4-6 3/4	6	11 1/2	3 1/2	5/8	2500	2800

