



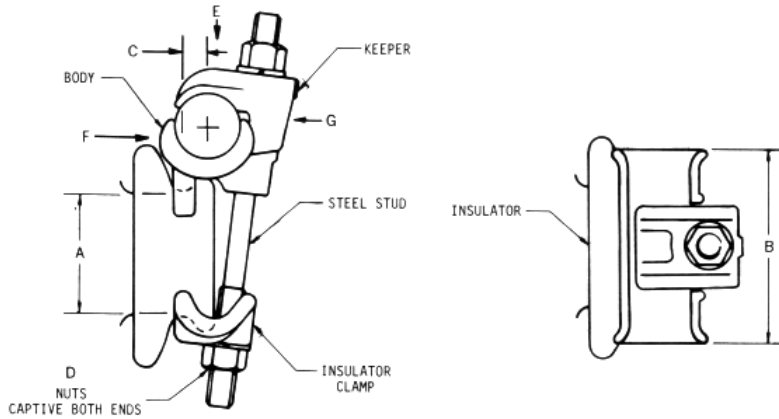
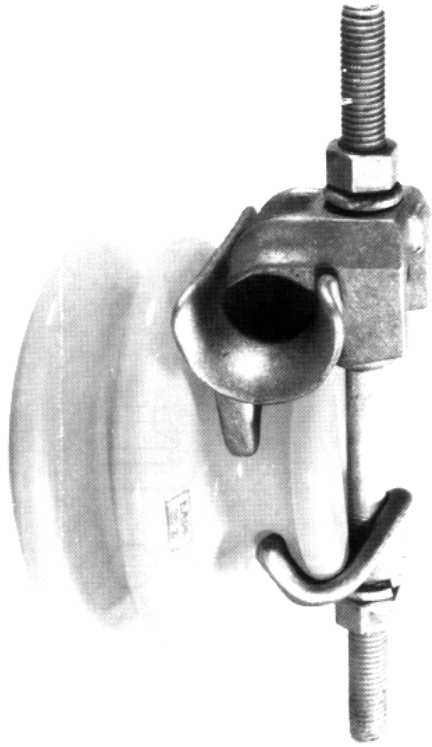
## Conductors Clamps

**"UNICON" Tie-Top Insulator Clamps (For use on vertical insulators)**

Adapts pin type and line posts to reliable horizontal construction.

**Construction Features:**

Specially designed for tie top insulators, This type clamp features a long steel stud for mounting on a variety of different diameter insulators. Nuts are captive at both ends for ease off installation. A single bolt clamping feature makes conductor installation possible with a standard wrench or hot stick without removing parts. Only three clamp sizes are required for conductor diameters from .25 to 1.5 inches. No parts need be removed for assembly to insulators or clipping in conductor. All cast parts are high strength heat treated 356-T6 aluminum alloy. Steel parts are hot dip galvanized for maximum corrosion resistance. This series is also available in all-aluminum clamp having a cast 356-T6 high strength heat treated aluminum body, keeper, and clamp with aluminum alloy stud, nuts, and lockwashers. To order all-aluminum clamp specify catalog number using suffix AA. For correct clamp size to use with a given conductor, and neck sizes of pin and post type insulators, refer to tables in the engineering Data Section of this catalog.



U.S. Patent 3,437,299  
Canadian 819,894

CAT No.	CONDUCTOR DIAMETER (INCHES)	INSULATOR SIZE	CLAMP DIMENSIONS (INCHES)			ULTIMATE STRENGTH (POUNDS)		
			A DIA.	B	C	D	E	F
1270	.25 - .800	2 3/8-3 1/2	4	1/4	1/2	2800	3000	800
1274	.600-1.060	2 3/8-3 1/2	4	3/8	5/8	2800	3000	800
1278	1.000-1.500	2 3/8-3 1/2	4	1/2	5/8	2800	3000	800
1272	.600-1.060	4"-6 3/4	4	1/2	5/8	2800	3000	800
1276	1.000-1.500	4"-6 3/4	4	3/16	5/8	2800	3000	800

OTHER SIZES AVAILABLE ON REQUEST