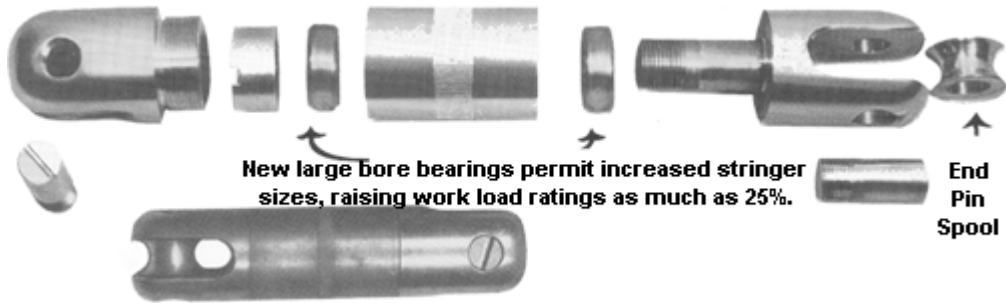




Tools

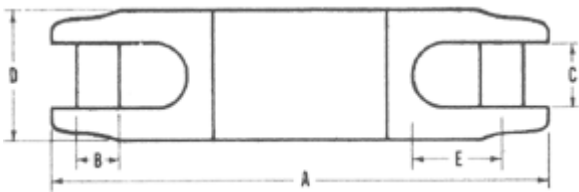
Heavy Duty Ball Bearing Swivels



REGULAR BALL BEARING SWIVELS								
Cat. No.	A	B	C	D	E	Working Loads Lbs.	Tensile Min. Lbs.	Thrust Brg. Crush Lbs.
8000	5"	1/2"	1/2"	1 1/8"	13/16"	5,400	18,000	40,000
8001	6"	1/2"	1/2"	1 3/8"	13/16"	9,000	30,000	50,000
8002	7"	5/8"	5/8"	1"	1"	12,000	40,000	56,000
8003	8 3/4"	3/4"	3/4"	1 1/4"	1 1/4"	21,000	75,000	86,000
8004	1"	7/8"	7/8"	1 7/8"	2 3/8"	30,000	100,000	140,000

End Pin Spools Available

Regular Ball Bearing Swivels

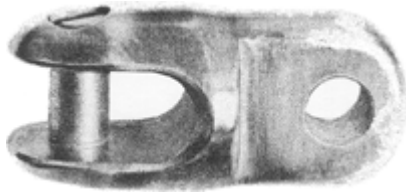


BALL BEARING SWIVELS are specifically designed for tension stringing, and assure that conductor will remain in neutral position during stringing of transmission and distribution lines. These twin race ball bearing swivels are manufactured from high grade pre stressed steel. Proper placement of thrust and radial bearing allow thrust and shock loads to be absorbed without affecting rotation of swivel. Pins are screwdriver removable.

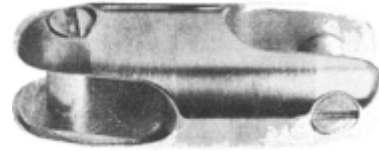
REGULAR BALL BEARING SWIVELS								
Cat. No.	A	B	C	D	E	Working Loads Lbs.	Tensile Min. Lbs.	Thrust Brg. Crush Lbs.
8011	5 1/8"	7/16"	5/8"	1 5/16"	7/8"	3,000	10,000	38,000
8012	6 5/8"	1/2"	7/8"	1 5/8"	1 1/8"	5,400	18,000	42,000
8013	7 5/8"	5/8"	1"	2"	1 5/16"	12,000	40,000	49,000
8014	9 3/8"	3/4"	1 1/4"	2 1/4"	1 5/8"	15,000	60,000	74,000

End Pin Spools Available

Links and Swivel Toggles



SWIVEL TOGGLE A toggle used in conjunction with our ball bearing swivel. Provides a 90° "break over" when pulling through angle structures or sharp bends in conduit.



LINK A rigid link used as a connector for rope, conductor or wire line. A screwdriver removable pin is provided in each end.

Cat. No.	Length A	Diameter D.	Jaw C
8020	3 1/4"	1 3/4"	5/8"
8021	4 3/4"	1 9/16"	3/4"
8022	5 3/4"	1 7/8"	1"
8023	6 3/4#"	2 1/8"	1 1/4"

Cat. No.	Length A	Diameter D.	Jaw C
8030	3 1/2"	1 1/4"	5/8"
8031	5"	1 9/16"	3/4"
8032	6"	1 7/8"	1"
8033	7"	2 1/8"	1 1/4"