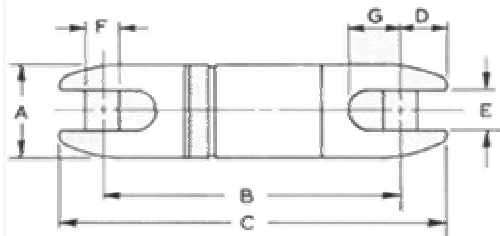




Transmission Stringing Travelers & Accessories

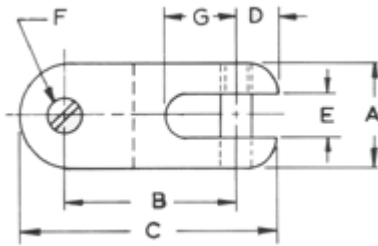
Series 6900 Line Stringing Swivels

These swivels have been designed for heavy duty tension stringing. All swivels are machined from alloy steel ' heat treated and cadmium plated for strength and wear. Only ground and matched sets of angular contact ball bearings are used to transfer the thrust load from the shank to the barrel. Neoprene seals with stainless steel spring retainers keep the high viscosity, wide temperature range grease in and keep out water, dirt and foreign matter. Swivel selection should be governed by pulling line diameter, grip size, opening dimensions, pin size, breaking strength, sheave groove and traveler throat dimensions..

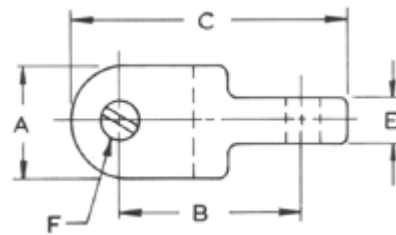


CATALOG NUMBER	DIMENSIONS (INCHES)							SAFE WORKING LOAD	WEIGHT (POUNDS)
	A	B	C	D	E	F	G		
6900	.87	2.34	3.09	.37	.31	.31	.46	1,800	.40
6901	1.25	3.65	4.34	.43	.59	.37	.68	4,000	1.00
6902	1.43	4.00	5.12	.56	.59	.43	.81	7,500	1.40
6903	1.87	5.43	7.06	.81	.75	.62	.93	10,000	3.62
6904	2.43	7.87	10.18	1.12	1.00	.87	1.56	16,000	8.00
6905	2.87	9.81	12.31	1.25	1.28	1.00	2.12	25,000	15.00
6906	2.50	8.90	11.15	1.12	1.00	.87	1.56	30,000	9.00
6907	3.87	13.25	16.75	1.75	1.75	1.50	3.50	50,000	40.00
6908	4.87	15.81	20.56	2.37	2.00	2.00	3.68	100,000	78.00

Connectors



Clevis-Clevis 90°



Clevis-Eye 90°

CATALOG NUMBER	FIG. NO.	DIMENSIONS (INCHES)							SAFE WORKING LOAD	WEIGHT (POUNDS)
		A	B	C	D	E	F	G		
6920	1	1.25	1.81	2.87	.43	.59	.37	1.00	4,000	.60
6921	1	1.50	2.12	3.50	.56	.59	.50	1.12	7,500	1.00
6922	1	1.87	2.62	4.37	.81	.75	.62	1.31	10,000	1.85
6923	1	2.50	3.75	6.00	1.12	1.00	.87	1.87	16,000	4.70
6930	2	1.25	2.25	3.12	.43	.59	.37	1.00	4,000	.80
6931	2	1.50	2.62	3.75	.56	.59	.50	1.12	7,500	1.20
6932	2	1.87	4.00	5.37	.81	.75	.62	1.31	10,000	2.50
6933	2	2.50	4.25	6.50	1.12	1.00	.87	1.87	16,000	5.00